

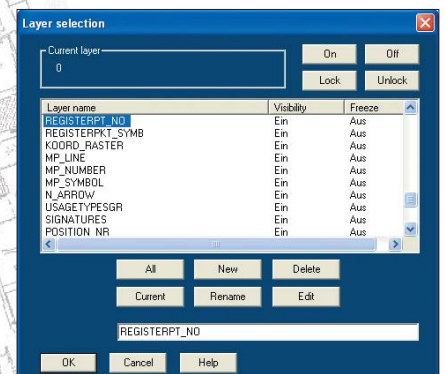
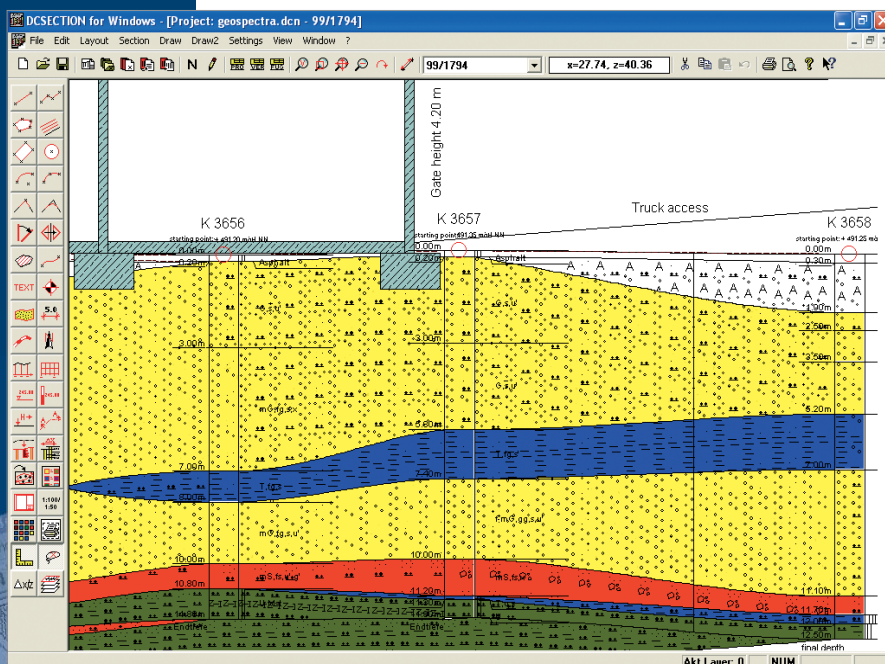
# Geological Sections and Drill-Point plans DCSECTION

- Display of the soil layers acc. to DIN 4023:2006, ÖNORM B 4401, SN 640 034, British Standard BS 5930
- German, English, French program version

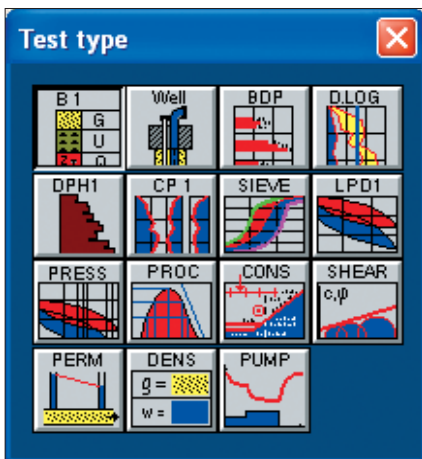
## Site map function

- Creation of site maps (drill-point plans)
- Import from CAD through DXF or scanned plans through bitmaps, export of plans in DXF and JPEG format
- Support of blocks in DXF
- Complete layer management with switch on/off and freeze
- Edit with extensive CAD functions: lines, texts, polygons, intersection, symbols, dimension strings
- Optional graphical input with/without grid, snap and ruler tools or with the keyboard
- Customizable colors, line types, line widths, etc.
- Insert profiles, dynamic probe diagrams, etc. as symbols

Section graphic



Layer management

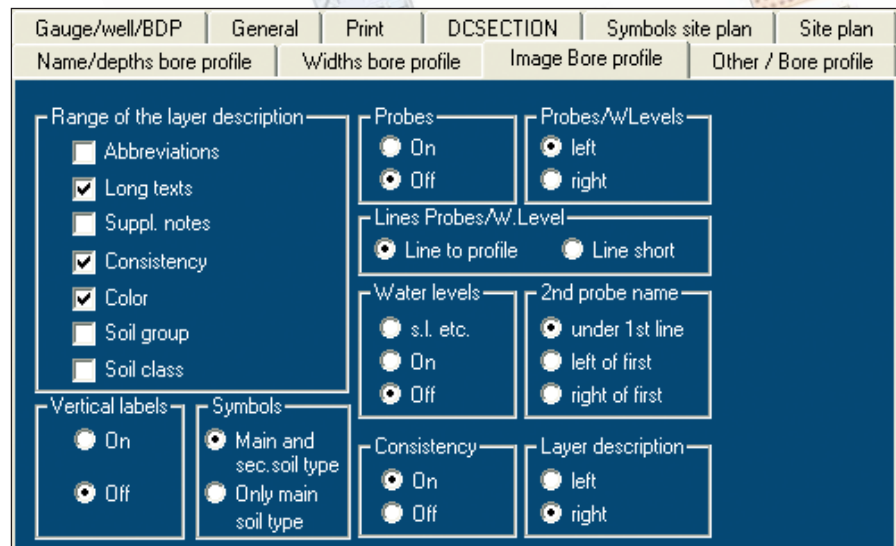


- Automatic, correct arrangement with coordinate values
- Draw sections as arbitrary polylines
- Auto-Section to create automatically a horizontal section with correct arrangement of positions and heights

#### Horizontal sections

- Access to single tests of DCBORE, DCPROBE, etc.
- Data display from a database: each modification is immediately displayed in the plan
- Complete configuration of the test graphic with plan-related storage
- Automatic arrangement by height according to point of application
- Filling of layer areas of any shape: limitation by straight lines or curves (splines), filling with layer symbols and colors

*Selection of tests to be inserted*



*Extensive configuration*

- Integration of images through bitmaps, e.g. photographs
- Inserting plans into another plan: e.g. small site map into a horizontal section
- Additional functions like elevations, symbols, setting kilometers, scale, railway line
- Automatic legend of all soil types
- Plan formats from DIN A4 to A0 and customizable formats
- Hardcopy tool for quick output of overviews and excerpts on DIN A4
- Low-price basic version DCSECTION-light (without site map function, Auto-Section and additional functions)

