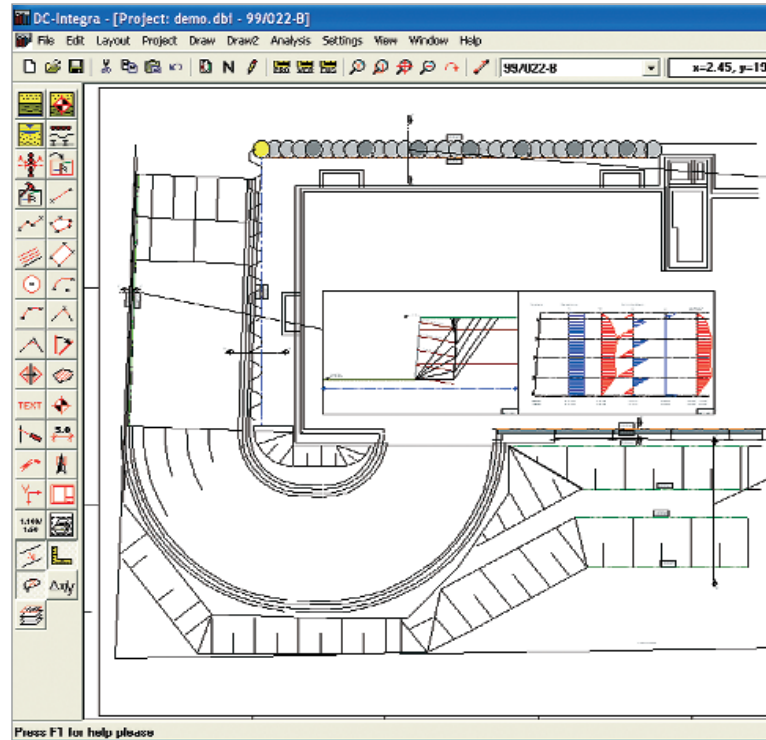


# Integrated foundation engineering DC-Integra

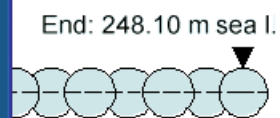
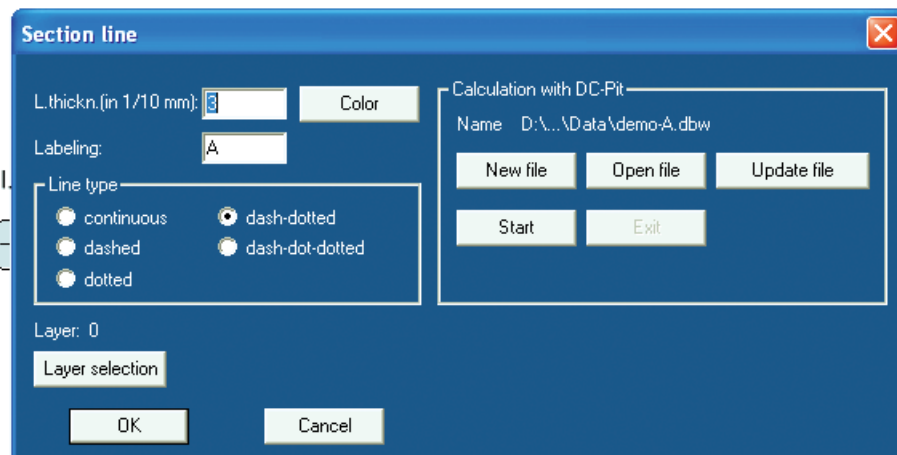
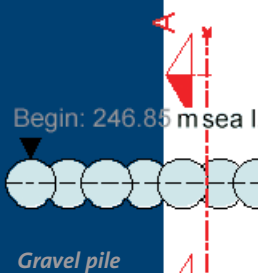
- German and English program version
- Import of plans from the CAD with DXF, export of plans into DXF, integration of images through bitmaps
- Complete layer management with switching on/off and freezing
- Edit process with extensive CAD tools: lines, texts, polygons, intersection, symbols, dimension strings, anchor symbols
- Assignment of wall types to lines by predefining parameters such as girder types, bore-pile diameters and spacing
- Exact graphic of the wall with macros incl. depth data as well as joint options
- Management of layer data, variable through bore points

*Link to the respective analysis program*



*Assignment overview of the wall types*

- Automatic interpolation of heights above sea level, with assignment to soil layers
- Definition of the analysis sections through arbitrary intersection lines





- Management of all sections in a plan
- Automatic start of the pertaining analysis program: DC-Pit, DC-Nail, DC-Slope, DC-Underpinning
- Quick transfer of all geometrical and type data: wall type and parameters, thickness and soil layers to the calculation program
- Additional edit process (excavations, anchor lengths) and analysis in the calculation program
- Integration of the result graphics into the plan
- Update tool in case of modifications in the calculated section
- Permanent overview of all sections in the project through complete management in the plan
- Plan formats from DIN A4 to A0 + customizable formats
- Hardcopy tool for quick output of overviews and excerpts on DIN A4

*Including of result graphics*

