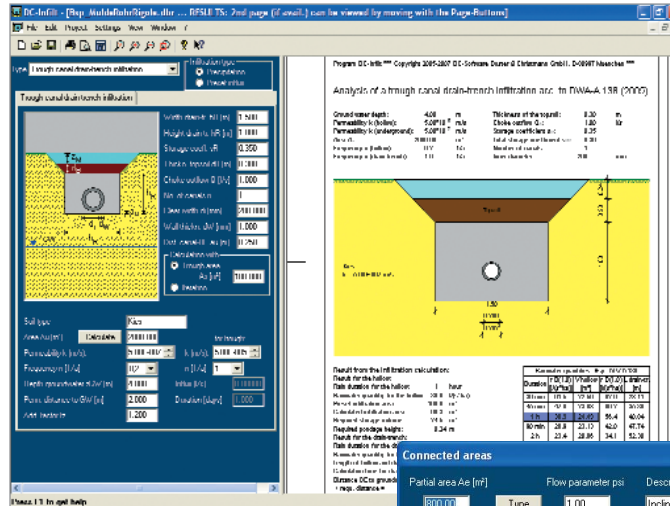


Analysis of infiltrations

DC-Infilt

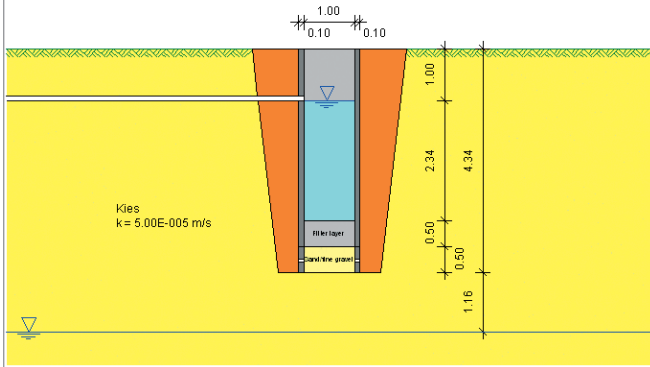
- Analysis of infiltration constructions acc. to DWA-A 138 (2005) and Herth/Arndts
- Area infiltration
- Trough infiltration
- Drain-trench infiltration
- Canal drain-trench infiltration
- Trough drain-trench infiltration
- Trough canal drain-trench infiltration
- Well infiltration type A/B acc. to DWA



Trough canal drain-trench infiltration

Analysis of a well infiltration type B acc. to DWA-A 138 (2005)

Ground water depth:	5.50 m	Depth of the feed pipe:	1.00 m
Permeability k:	$5.00 \cdot 10^{-5}$ m/s	Thickness of the filter layer:	0.50 m
Area A _e :	100.00 m²	Thickness of the sand layer:	0.50 m
Frequency n:	0.2 1/a	Loading factor E:	1.2
Clear width well:	1.00 m		



Well infiltration

- Well infiltration type A/B acc. to Herth-Arndts
- Horizontal drains
- Infiltration basin
- Free definition of the rainwater quantities acc. to KOSTRA atlas for any location
- Calculation of the connected areas with flow parameters

- Alternatively analysis of the infiltration of given influx quantities
- Automatic optimization of drain-trench lengths and trough areas
- Well infiltration with calculation of the dam-up height and range
- Horizontal drains dependent from the parameters of the drain canals
- Display of the table with rainwater quantities for different durations and critical value with selectable table size
- Most simple user interface, fast high-quality output

Calculation of partial areas

