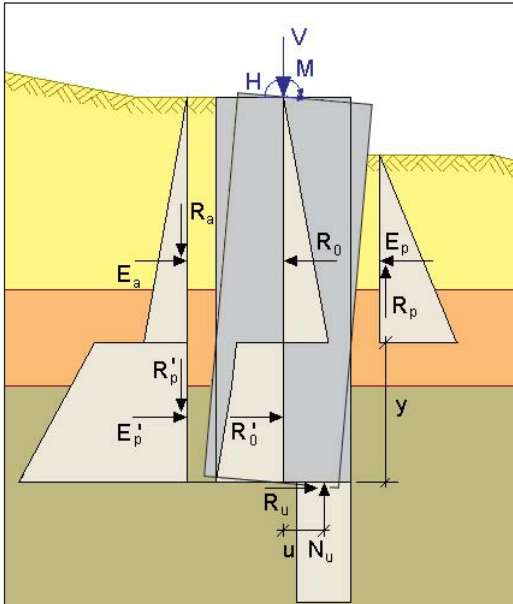


# DC-Footing/Pylon

Analysis of fixed pylon footings  
acc. to Steckner

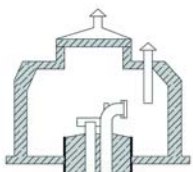


- **Improved approach**  
with soil layers, ground water level, excavation depths and berms !
- Fixing of the footing by active and passive earth pressure
- Activation of the earth pressure by rotation of the footing
- Iteration of the level of the zero line y
- Serviceability check by perm. inclination
- Stability analysis by the limit value of load moment

news

## DC-Footing

Analysis of footings with all foundation engineering checks and design of reinforced concrete



- Rectangular, circular and strip footings, block and sleeve foundations
- Check against overturning, sliding, bearing capacity, perm. soil pressure, settlement analysis
- Design for bending, shear force, punching and sleeve design
- Load case combinations acc. to DIN 1055-100 with leading / non-leading loads and alternative load cases
- 3D display, NEW: with display of the base pressure

