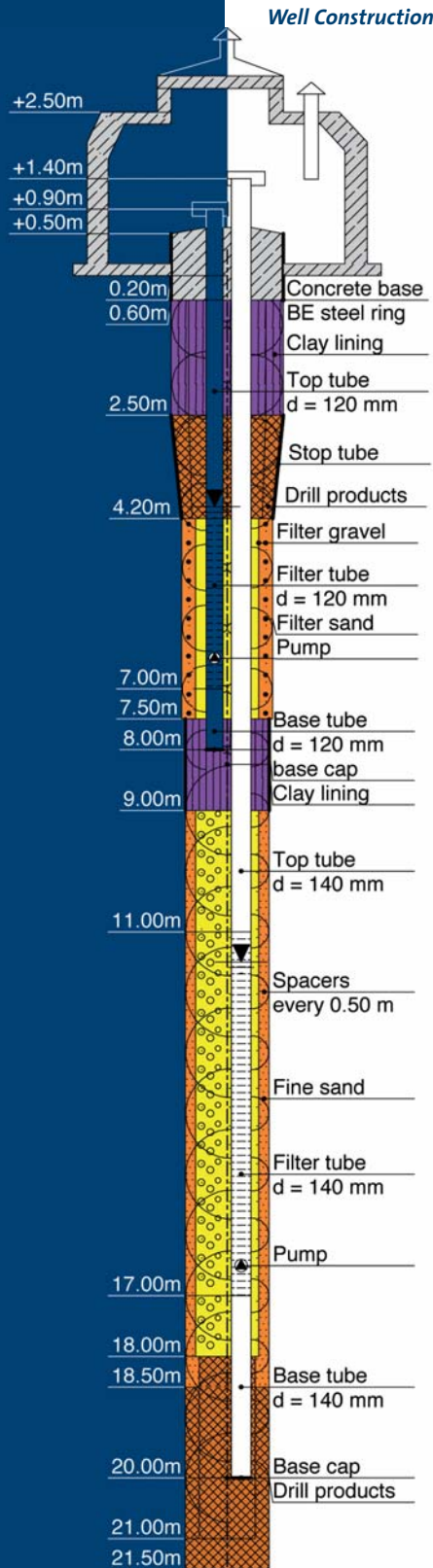


# Bore hole logs, Layer specifications Well and gauge sinking DCBORE

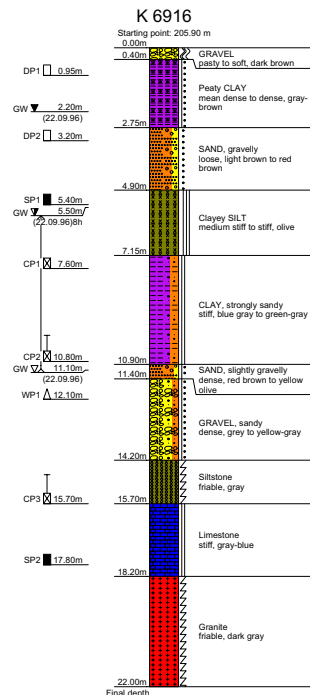


- Bore profiles acc. to DIN 4023:2006, DIN EN ISO 14688-1, ÖNORM B 4401, SN 640 034 and 670 008, British Standard BS 5930
- Layer specification acc. to DIN 4022, EN ISO 22475-1, DIN 4943:2005
- Well and piezometer display acc. to DIN 4943:2005
- German, English, French program version
- Geothermal borings with sounding cone and colored pipes
- Predefined texts with right mouse button in the layer specification

## Functions

### Bore hole logs:

- Layer input through short designations, immediate conversion into long text



Bore profile

DC-Software GmbH Hansahl-Arendt-Weg 3 U-80987 München Tel. +49-89-295 048-33, Fax: 18		Enduser: L2 Report: 87-23 File no.			
Layer specification for borings without continuous sampling or coring probes					
Project: Demo project		Date:			
boring no. K 6916		Page: 3			
1	2	3	4	5	6
To	From	Soil type, name and additional notes	Comments Special probes Water bearing Tests Core loss Other	Type	Sampling Probes
...m under applic. point	...m above applic. point	a) Quantity by casing b) Casing name c) Quantity by bore process d) Casing name e) Color f) Group g) Lame content			Flagm in m (lower edge)
		a) GRAVEL b) passy to soft c) dark brown			
		a) Peaty CLAY b) mean dense to dense c) gray-brown	water at rest 2.20m b. AP 22.09.96	DP	1 0.95
		a) SAND, gravelly b) loose c) light brown to red brown		DP	
		a) Clayey SILT b) medium stiff to stiff c) olive	water rise 5.50m b. AP 22.09.96	SP	
		a) CLAY, strongly sandy b) stiff c) blue gray to green-gray		CP CP	

bore hindrance  
chisel work  
easy to bore  
hard to bore  
high penetr. resistance  
light chisel work  
little penetr. resistance

Edit  
Undo  
Cut  
Copy  
Paste  
Select all

## Layer specification

- Free completion of the layer descriptions
- Samples and water levels (different types), soil group and soil class
- Complete symbol editor to define and modify all soil types, abbreviations and colors
- Layer specification: layout acc. to DIN 4022 and EN ISO 22475, user-defined selection of font and font style (bold, italic)

## Level and well finish:

- Detailed graphic of level-head and/or well pit
- Any number of pipes (multi-level)
- All kinds of pipe types (extension pipe, different types of filter pipes, sump pipe, gauge pipe) incl. haunches
- User-defined fillings with symbol editor, any number of multi-fillings (counter filter), with block pipe or continuous sealing

